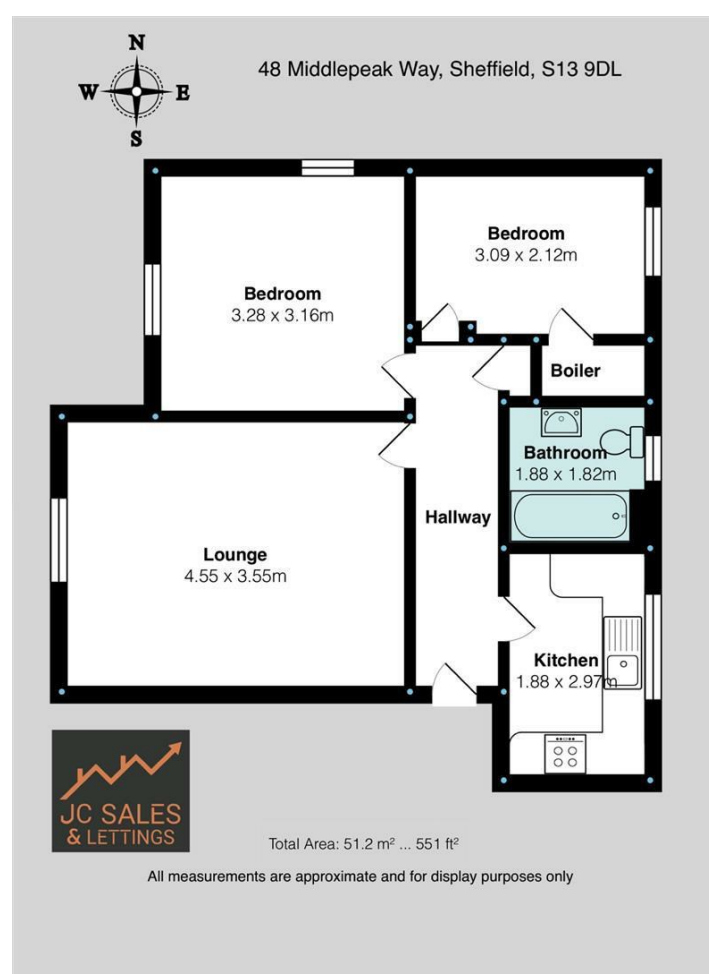
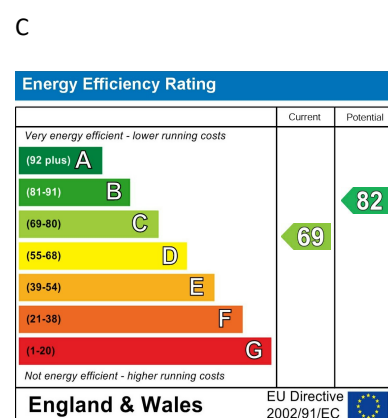


Directions

Viewings

Viewings by arrangement only. Call 0114 483 0038 to make an appointment.

EPC Rating



48 Middlepeak Way, Handsworth, Sheffield, S13 9DL

£850 Per month

- Two bedroom apartment
- Fantastic transport links
- Ideal for a single occupant, professional couple or small family
- Well presented
- Early viewing highly recommended
- First floor
- Off street parking
- Close to local amenities
- Available for immediate occupation
- EPC Grade C

48 Middlepeak Way, Sheffield S13 9DL

*** AVAILABLE FOR IMMEDIATE OCCUPATION ***
A WELL PRESENTED, first floor apartment with OFF STREET PARKING.
Benefiting from fantastic transport links to the CITY CENTRE and the M1 GATEWAY. Situated just off the PARKWAY, this two bedroom apartment which offers a generous amount of living space and is perfect for a single occupant, professional couple or small family.
In brief the accommodation comprises of: entrance hall, lounge, kitchen, two bedrooms and a bathroom / WC. There is one allocated car parking space to the rear of the property.
An early viewing is highly recommended to avoid disappointment!
EPC Grade C.



Council Tax Band: A

